

*Welcome to*  
*Investment Innovation*



Investment Trust Management Co., Ltd

2007. 05

Introduction

※ Information and opinions expressed are considered accurate and reliable as of the date of this content only. However, I ITMC do not represent contents in this report are accurate or complete, and it should not be relied upon as such.

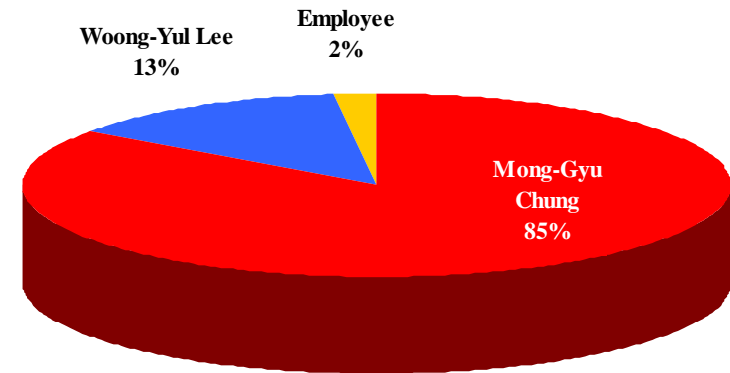
# I. Profile

## 1. General Information

<b>Company Name</b>	<b>I Investment Trust Management Co., Ltd</b>
<b>Affiliation</b>	<b>Hyundai Development Co., Ltd</b>
<b>Established</b>	<b>6/24/2000</b>
<b>CEO</b>	<b>Kyungjung Woo (since 6/2004)</b>
<b>Paid in Capital</b>	<b>15.8 Billion Won (approx. USD 16 Mil.)</b>
<b># of Employee</b>	<b>24</b>
<b>Address</b>	<b>23-2 Yeoeuido-dong Youngdeungpo-ku Seoul, Korea</b>
<b>Homepage</b>	<b><a href="http://www.iinvest21.com">http://www.iinvest21.com</a></b>

## 2. Shareholder Structure

Shareholder	Ownership(%)
<b>Mong-Gyu Chung</b> (Chairman- Hyundai Industrial Development)	85
<b>Woong- Yeul Lee</b> (Chairman- Kolon Group)	13
<b>Employee</b>	2



### 3. Asset Under Management

(in 100 Mil Won / US\$ Mil)

Class		FYE 2003	FYE 2004	FYE 2005	FYE 2006	As of 2007.5.11
<b>Fixed Income Type</b> (in US\$ Mil)		5,083 (550)	8,054 (871)	3,343 (361)	14,657 (1,585)	12,481 (1,349)
<b>Combination</b>	<b>Equity</b> (in US\$ Mil)	1,694 (183)	332 (36)	113 (12)	80 (9)	42 (5)
	<b>F/I</b> (in US\$ Mil)	253 (27)	571 (62)	3,149 (340)	1,331 (144)	6,107 (660)
	<b>Total</b> (in US\$ Mil)	1,947 (210)	903 (98)	3,262 (353)	1,411 (153)	6,149 (665)
<b>Equity Type</b> (in US\$ Mil)		422 (46)	113 (12)	330 (36)	305 (33)	301 (33)
<b>M M F</b> (in US\$ Mil)		1,967 (213)	9,533 (1,031)	5,157 (558)	232 (25)	230 (25)
<b>Derivatives</b> (in US\$ Mil)		-	2,760 (298)	2,742 (296)	2,298 (248)	2,266 (245)
<b>Mutual Fund</b> (in US\$ Mil)		-	136 (15)	872 (94)	1,154 (125)	1,138 (123)
<b>Total</b> (in US\$ Mil)		<b>9,419</b> <b>(1,018)</b>	<b>21,499</b> <b>(2,324)</b>	<b>15,706</b> <b>(1,698)</b>	<b>20,059</b> <b>(2,169)</b>	<b>22,566</b> <b>(2,440)</b>

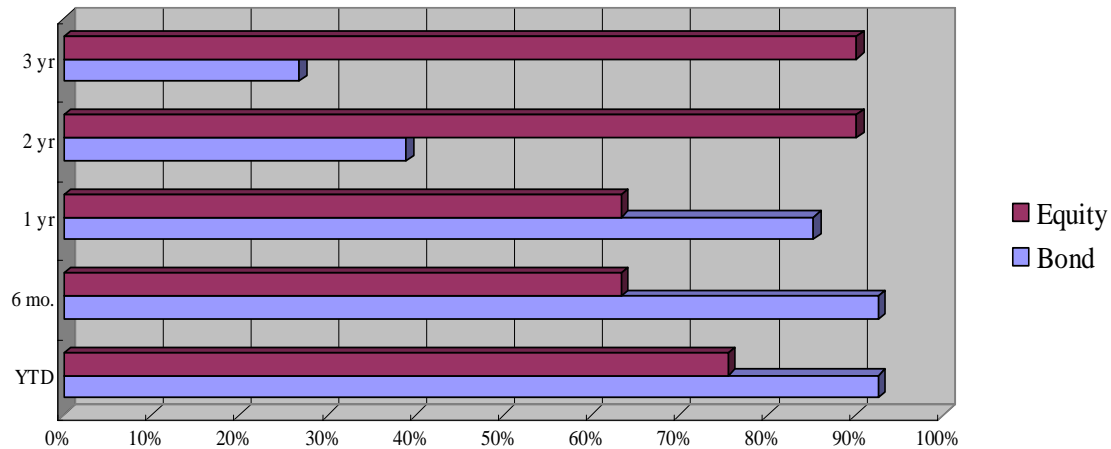
Based on exchange rate of 925won/ US\$ as of 5/11/2007.

#### 4. Performance : Rank among peer investment managers (as of 3/2007)

Type	6 month	1 year	2year	3year	YTD
Bond Funds	3/41	6/41	25/41	30/41	3/41
Equity Funds	5/41	15/41	4/41	4/41	10/41

Source: Korea Fund Rating Co.

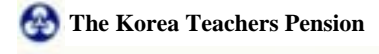
Performance Ranking \*



\* Performance ranking in reverse percentile

# 4. Institutional Investor Group

Pensions



other Institutional investors



# 5. Distribution Network

**Banks**



NATIONAL AGRICULTURAL COOPERATIVE FEDERATION  
 SHINHAN BANK  
 WOORI BANK  
 KB KOOKMIN BANK  
 IBK Industrial Bank of Korea  
 KWANG-JU Bank

**Securities Firm  
Insurance Firm**

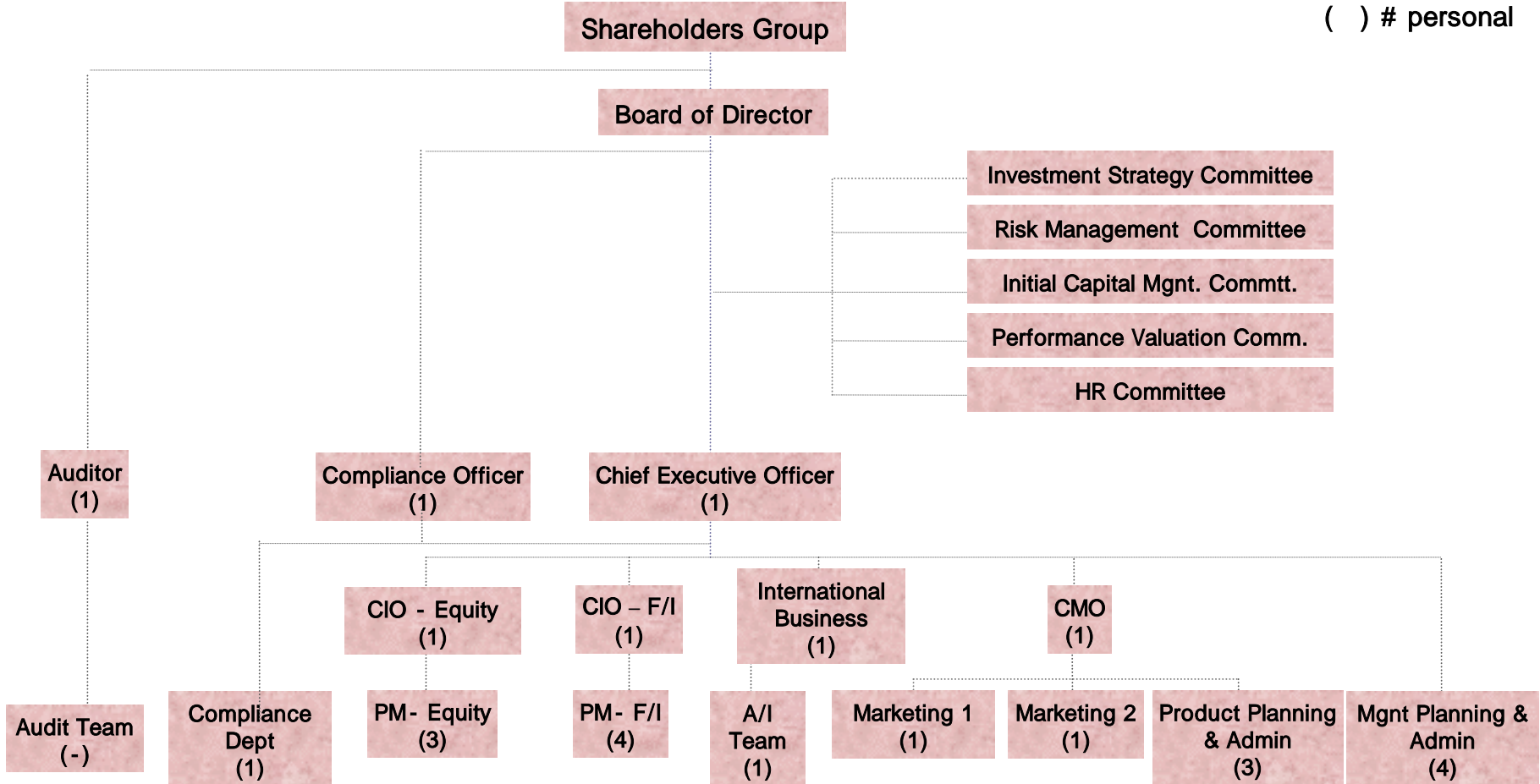


Tong Yang Investment Bank  
 SAMSUNG SECURITIES  
 Daehan Investment & Securities  
 SHINYOUNG  
 HYUNDAI SECURITIES  
 WOORI INVESTMENT & SECURITIES  
 Korea Investment & Securities Co., Ltd.  
 HANYANG SECURITIES  
 GOODMORNING SHINHAN SECURITIES  
 MERITZ Securities  
 KYOBO Securities  
 KOREA LIFE INSURANCE

# II. Organization

## 1. Structural Organization

( ) # personal



<p>Organization Characteristics</p>	<ul style="list-style-type: none"> <li>- Committee based management</li> <li>- Strengthen Portfolio Management and Risk Management</li> </ul>
-------------------------------------	---

## 2. Executives

Title	Name	Education	Key Career
CEO	Kyung-Jeong Woo	Seoul National University - MBA	Global Asset Management - CEO Hanil Investment Trust – CIO: Equity Samsung Investment Trust – Chief PM
Executive Managing Director	Sang-Jae Han	Kookmin University - Economics	Landmark Investment Trust – Director of Marketing Samsung Securities – Head of Invest. Trust Marketing Daehan Investment Trust Securities
Executive Managing Director	Eugene Chun	Syracuse University- Economics	Samsung Life Investment (America) – CIO / MD Appaloosa Management - Portfolio Manager/ MD Interlink Capital - Portfolio Manager/ Partner LG Securities – Head of Oversea Investment
Sr. MD	Harry Kim	KDI School Asset Mgmt MBA Candidate Busan Univ. - Economics	Tongyang Investment Trust – CIO: Fixed Income Chohung Investment Trust – Chief PM: F/I CFA
Sr. MD	Ho-Dug Hong	Yonsei University- MBA	Hanil Investment Management – Chief PM: Equity LG Securities – F/I Product Development CIA
MD	Kyung-Ku Jung	Seoul National University - Law	Shinhan Securities – Planning Dept. Shinhan Investment Trust - Head of Planning Dept.
Auditor	Sung-Ho Cho	UCLA DBA	UCLA – Professor Hanmi Bank Board of Director KDI School of Int'l Policy – Professor

### **3. Philosophical Platform**

- Focused on a cross-disciplinary team approach where clients benefits from the pooled expertise of the firm's resources.**
- Pursuing long term stable return with disciplinary strategic application.**
- Committed to deliver a high level of service tailored to the need of each client.**
- Broaden and deepen asset management capabilities to get ahead of fast changing global market.**
- Provide global base investment opportunities to clients through innovative and customized approach.**
- Maintain maximum transparent and disciplinary risk management.**

## 4. Portfolio Manager

### 4.1 Equity Portfolio Management Team

<b>Title</b>	<b>Name</b>	<b>Job Description</b>	<b>Education</b>	<b>Key Career</b>	<b>Yrs in Industry</b>
CIO	Ho Dug, Hong	Equity PM	Yonsei University- MBA	Hanil Investment Trust – Head of Equity Management LG Securities- Product Development Team	10
Manager	Jung Hoon, Park	Equity PM	Seo Kang Univ. – BA in Economics	Yuhwa Securities – Investment Analysis	2
Associate	Joon Hyung, Kim	Equity PM	Korea University - MBA	Lee & Kim Investment Advisor	1

## 4. Portfolio Manager

### 4.2 Fixed Income Portfolio Manager

Title	Name	Job Description	Education	Key Career	Yrs in Industry
CIO	Harry Kim	F/I PM	KDI School –MBA Busan Univ. - Economics	Tongyang ITMC CIO- F/I Chohung ITMC Head of F/I PM	10
Head of Team 1	Yong-Jin Suh	F/I PM	Yonsei Univ. – BA Political Administration	Dong Bu ITMC – Product Develop. Dong Bu ITMC – F/I PM	10
Manager	Hong-Taek Lim	F/I PM	Yonsei Univ. - Economics Yonsei Univ. – MA Economics	Hanhwa ITMC – F/I PM Hanhwa ITMC – Strategic Planning	5
Asst. Mngr	Jeong-Sook Eun	F/I PM	Ehwa Univ.- Statistics	Dong Bu ITMC – F/I PM	5

### 4.3 International Business & Alternative Investment Team

Title	Name	Job Description	Education	Key Career	Yrs in Industry
CIO & Exec. MD	Eugene Chun	PM & Marketing	Syracuse Univ.- Economics	Samsung Life – Oversea CIO/MD Appaloosa Management – PM/MD	20
Deputy GM	Joon-seock Hwang	A/I PM	Korea Univ. – Business & Administration Suwon Univ. – Financial Engineering - MA	Woori ITMC – Strategic Planning Woori ITMC – F/I PM	5